



Shaftesbury Avenue

, Bristol, BS6 5LU

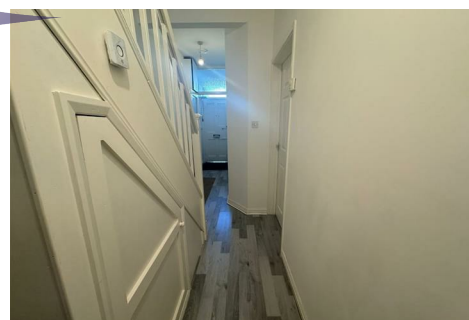
£2,400 Per Month



Lets Rent Are Proud to Present This Spacious House on Shaftesbury Avenue, this charming terraced house built in 1880 offers a perfect blend of historic charm and modern convenience. As you step inside, you are greeted by a spacious reception room bathed in natural light, perfect for entertaining guests or relaxing with your family.

With four fully furnished bedrooms, this property provides ample space for a growing family or for professionals and students looking to share a comfortable living space. The modern specification bathrooms are a true highlight, boasting sleek designs and light colours that create a tranquil atmosphere for unwinding after a long day.

Spanning 1,152 sq ft, this house offers plenty of room to make it your own. The EPC Rating of D ensures energy efficiency, while the Council Tax Band B makes it an affordable choice for homeowners. The location on Shaftesbury Avenue in Montpellier is ideal, with its vibrant community and proximity to local amenities making it a sought-after area in Bristol.



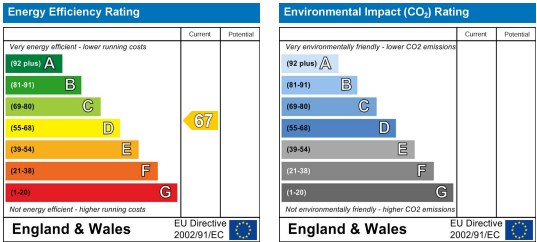
Area Map



Floor Plans



Energy Efficiency Graph



These particulars, whilst believed to be accurate are set out as a general outline only for guidance and do not constitute any part of an offer or contract. Intending purchasers should not rely on them as statements of representation of fact, but must satisfy themselves by inspection or otherwise as to their accuracy. No person in this firms employment has the authority to make or give any representation or warranty in respect of the property.